

## Bradshaw Close Wimbledon, SW19 8NL

£650,000 Freehold



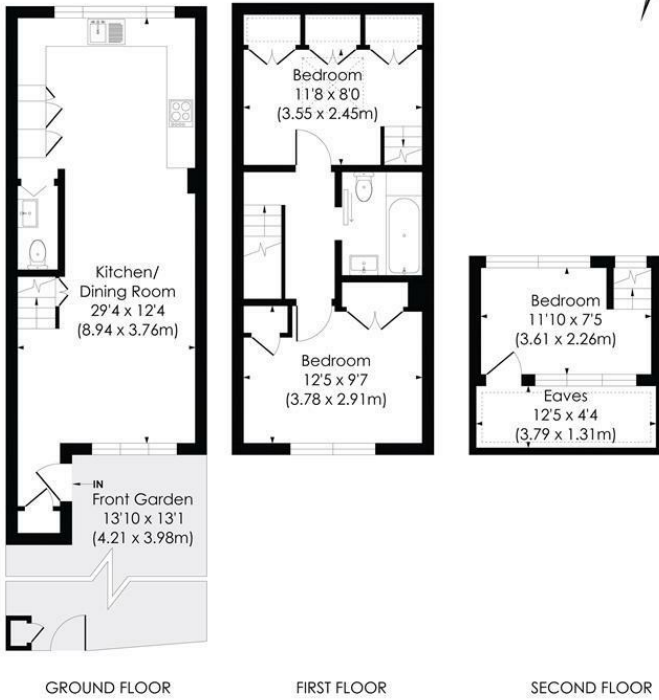
**A stunning, two bedroom terraced home with allocated off street parking, no onward chain and a lovely front garden, located in a quiet cul-de-sac close to Wimbledon Town Centre and South Park Gardens. On the ground floor is front porch, w/c, good storage and a double length living/dining room which leads into a fully integrated modern kitchen. Upstairs, there is a three piece bathroom suite and two double bedrooms (with built-in wardrobes), the second boasting an additional mezzanine area perfect for a study or additional storage.**

**BRADSHAW CLOSE, SW19**

Approx. Gross Internal Floor Area

**900 Sq. ft/83.59 Sq. m** (Including reduced height)

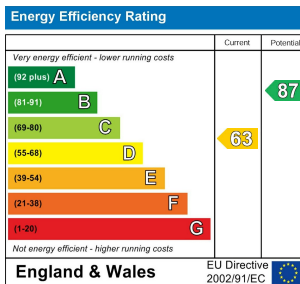
**808 Sq. ft/75.1 Sq. m** (Excluding reduced height)



**pixangle**  
PROPERTY MARKETING

© Pixangle Property Marketing Ltd. info@pixangle.com Tel: 0208 870 2118  
This floor plan has been prepared for the purpose of illustration only in accordance with the latest RICS code of measuring practice and is not to scale. All measurements and areas are approximate and whilst every effort has been made to ensure the accuracy of the plan contained here, no responsibility is taken for any error, omission or misstatement.

- Two Bedroom House
- Stunning Condition
- Front Garden
- Allocated Parking
- No Onward Chain
- Useful Mezzanine Area
- Quiet Cul-De-Sac
- Close to Wimbledon Town Centre
- Council Tax Band E - Estate charge: £456.83 per annum
- EPC Rating D



**For Free Mortgage Quote and Best Mortgage Rates, call an Ellisons Mortgage Advisor on 020 8944 9494**



Although these particulars are believed to be correct, their accuracy is not guaranteed and they do not form part of any contract.

**Celebrating 30 years of successful Sales and Lettings in Merton**

